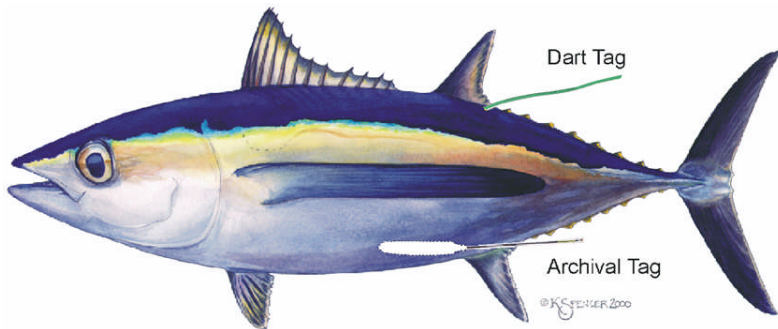


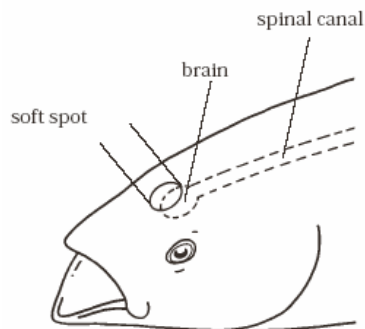
RECOVERY INSTRUCTIONS FOR ARCHIVAL TAGS IN ALBACORE

Tagged fish can be identified by 1 or 2 green dart tags located at the base of the second dorsal fin. Archival tags are electronic devices that are implanted in the belly of various tunas (albacore, bluefin, yellowfin, bigeye, and skipjack). They have a stalk that sticks out of the belly. The reward for the return an archival tag is \$500!



If a tuna is caught with one of these archival tags please follow these procedures to ensure the tag does not get damaged and can be returned to the scientists intact:

1. Immediately dispatch (kill) the fish by inserting an instrument such as a knife or screwdriver into its brain (just behind the soft spot on its head between the eyes). This prevents the fish from damaging the tag when it thrashes on deck.



2. If possible, **DON'T FREEZE THE FISH IN BRINE**. Keep the fish on ice or in a chest freezer on its back or side so that the stalk protruding from its belly is not damaged (the stalk can be quite fragile)



3. **IF YOU MUST FREEZE THE FISH IN BRINE**, first take 3-4 pictures of the point where the tag stalk exits the belly. CAREFULLY cut the belly open working from about 6" forward of the tag to about ½" forward of the stalk. Cut shallow and use your fingers to tear the meat apart so that the knife doesn't cut the stalk or the tag body.



4. Gently remove the tag from the fish. The tag will be encased in mesentery tissue and may be difficult to pull out.



5. Keep the tag in a safe, cool, dry location where it won't fall or roll around. The tags are sensitive to vibrations.
6. Fill out the attached recovery information form as completely as possible.
7. Contact our local office to arrange for the return of the tag, recovery information and reward information.

ALBACORE
SWFSC
8604 La Jolla Shores Dr.
La Jolla, CA 92037
(858) 546-7192
http://swfsc.nmfs.noaa.gov/albacore_tag/

BLUEFIN & YELLOWFIN
IATTC
8604 La Jolla Shores Dr.
La Jolla, CA 92037
(858) 546-7100



ALBACORE ARCHIVAL TAG RECOVERY REPORT

DART TAG NUMBER ARCHIVAL TAG NUMBER

DATE TIME

LATITUDE NORTH SOUTH LONGITUDE EAST WEST

WATER TEMPERATURE
 °F °C

FORK LENGTH cm in

WEIGHT kg lb

GEAR TROLL POLE \ LINE ROD_REEL LONGLINE OTHER:

SEX MALE FEMALE UNKNOWN

VESSEL NAME

ANGLER OR CAPTAIN

NAME

ADDRESS

PHONE

COMMENTS